

Impact Punch Down Tool with 110 Blade

Product Detail



Overview

Terminate and cut in one step with precision high or low impact setting with a combination of 110/66 blade. This tool is ideal for punching down on keystone jacks, patch panels, 110 and 66 wiring blocks.

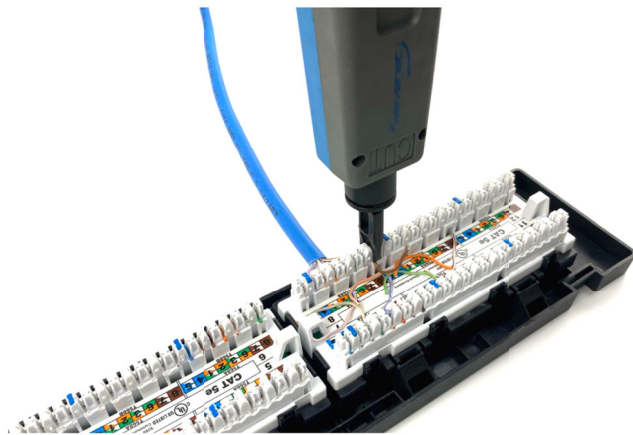
Features

- Terminates and cuts wire in a single punch
- Adjustable impact strength from high to low
- Can be fitted with a wide variety of replacement blades
- Ergonomic handle design for comfortable and secure
- Includes a 110 blade with wire pick and spludger
- Spare blade storage in the handle

Package Includes

- Impact Punch Down Tool, 1 PC.

Application



Part Number	Color	Package
TOOLPD-11066	Blue & Gray	Single Pack