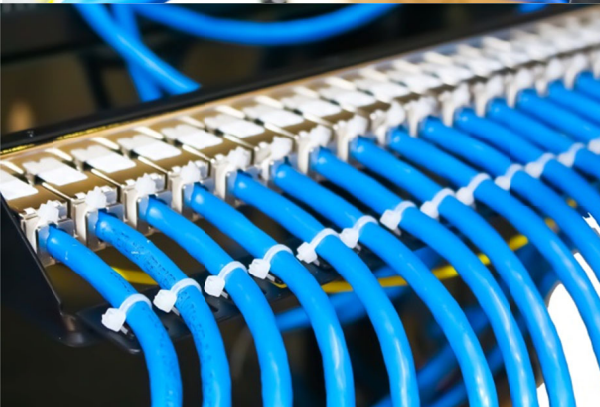
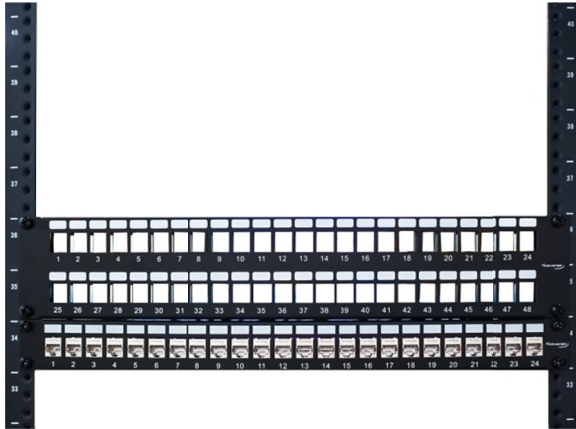


# 1U, 24-Port & 2U, 48-Port CAT6A FTP Blank Patch Panels, w/CAT6A HDJ Series Keystone Jacks

## Product Details



## Overview

Wavenet's 1U 24-Port & 2U 48-Port Blank Patch Panels are an ideal solution for converting from Unshielded or U/UTP to Shielded or F/UTP applications. Panels are designed to protect critical data from EMI (electromagnetic interference) and RFI (radio frequency interference). This makes them ideal for use in health care, industrial manufacturing, and other environments industries where EMI and RFI may be present.

## Features

- Shielding protects against EMI/RFI and provides data security
- Panels can also be used for U/UTP or F/UTP applications
- Panels feature stainless-steel plate with grounding wires and rear cable management bar
- Configurable with Wavenet's HDJ Series CAT6A keystone jacks
- Backwards compatible with CAT5E and CAT6 structured cabling systems
- Available in 1U, 24-Port and 2U, 48-Port

## Standards Compliance

- ANSI/TIA-568.2-D
- IEC 60603-7
- ISO/IEC 11801
- UL Listed

Part Number	Description	Qty
BPPWM-24	24-Port Blank Patch Panel	1
HD-6AKSJ-FTP	CAT6A Shielded, FTP Jack	24
*Must be ordered together with the same quantity as panel and FTP jacks. Assembly required		
BPPWM-48	48-Port Blank Patch Panel	1
HD-6AKSJ-FTP	CAT6A Shielded, FTP Jack	48
*Must be ordered together with the same quantity as panel and FTP jacks. Assembly required		



### Cable ID: CAT6A F/UTP CMP RETEST

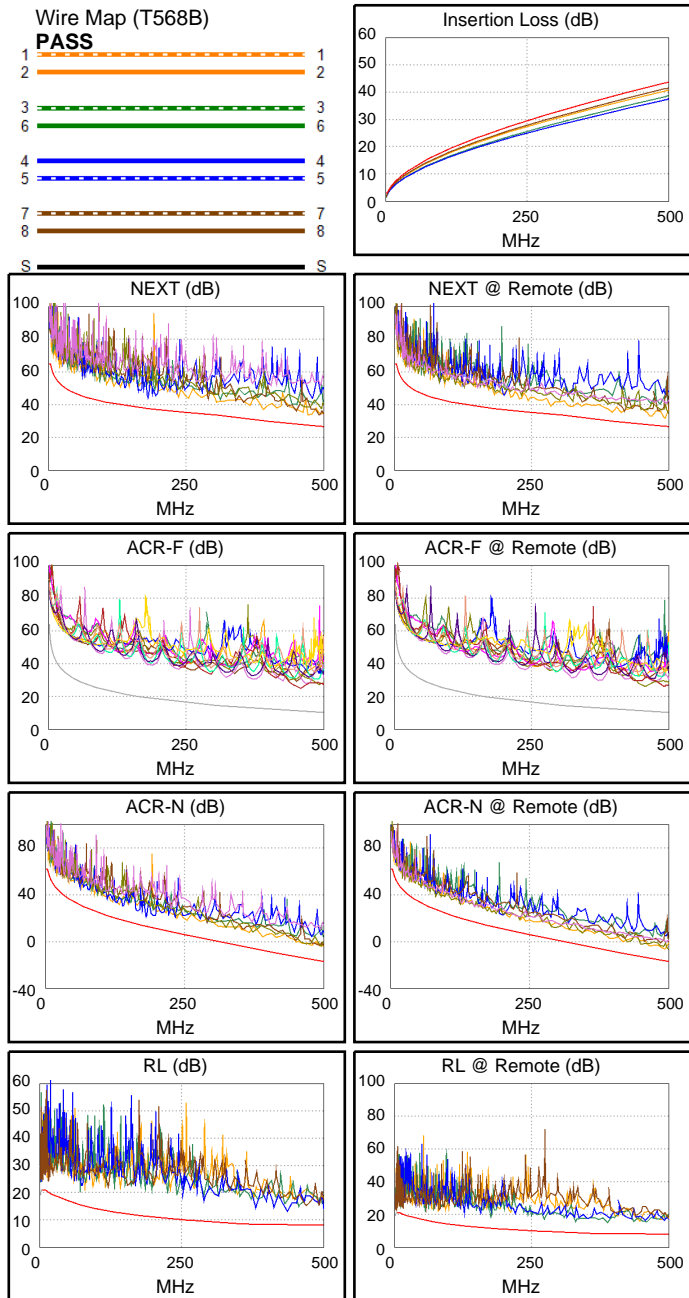
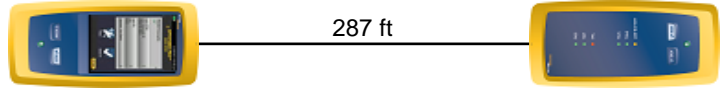
Date / Time: 06/30/2021 09:10:05 AM  
**Headroom 4.7 dB (NEXT 12-36)**  
 Test Limit: TIA Cat 6A Perm. Link  
 Cable Type: Cat 6A F/UTP  
 NVP: 74.0%

Operator: Sam Hen  
 Software Version: V6.6 Build 2  
 Limits Version: V7.6  
 Calibration Date:  
 Main (Module): 12/01/2017  
 Remote (Module): 12/01/2017

### Test Summary: PASS

Model: DSX-5000  
 Main S/N: 3658040  
 Remote S/N: 3658026  
 Main Adapter: DSX-PLA004  
 Remote Adapter: DSX-PLA004

Length (ft), Limit 295	[Pair 45]	287
Prop. Delay (ns), Limit 498	[Pair 78]	423
Delay Skew (ns), Limit 44	[Pair 78]	28
Resistance (ohms)	[Pair 78]	11.60
Insertion Loss Margin (dB)	[Pair 78]	2.3
Frequency (MHz)	[Pair 78]	500.0
Limit (dB)	[Pair 78]	43.8



Worst Case Margin Worst Case Value

PASS	MAIN	SR	MAIN	SR
Worst Pair	12-36	12-36	12-36	12-36
<b>NEXT (dB)</b>	5.0	4.7	5.0	4.9
Freq. (MHz)	473.0	285.0	473.0	493.0
Limit (dB)	27.4	34.4	27.4	26.9
Worst Pair	36	36	36	36
<b>PS NEXT (dB)</b>	6.0	5.2	6.5	5.9
Freq. (MHz)	473.0	419.0	492.0	490.0
Limit (dB)	24.6	26.4	24.0	24.1

PASS	MAIN	SR	MAIN	SR
Worst Pair	45-36	36-45	45-36	36-45
<b>ACR-F (dB)</b>	13.9	15.1	13.9	15.1
Freq. (MHz)	461.0	461.0	461.0	461.0
Limit (dB)	10.9	10.9	10.9	10.9
Worst Pair	36	45	36	36
<b>PS ACR-F (dB)</b>	15.9	18.0	15.9	18.4
Freq. (MHz)	461.0	461.0	461.0	492.0
Limit (dB)	7.9	7.9	7.9	7.4

N/A	MAIN	SR	MAIN	SR
Worst Pair	12-78	12-36	12-36	12-36
<b>ACR-N (dB)</b>	8.0	8.8	10.1	10.0
Freq. (MHz)	180.5	285.0	473.0	493.0
Limit (dB)	13.0	2.7	-14.9	-16.5
Worst Pair	12	12	36	12
<b>PS ACR-N (dB)</b>	10.3	9.4	11.5	10.5
Freq. (MHz)	473.0	285.0	492.0	493.0
Limit (dB)	-17.8	0.0	-19.3	-19.4

PASS	MAIN	SR	MAIN	SR
Worst Pair	45	78	45	36
<b>RL (dB)</b>	4.9	4.1	4.9	6.9
Freq. (MHz)	435.0	4.0	435.0	388.0
Limit (dB)	8.0	21.0	8.0	8.1

Compliant Network Standards:  
 10BASE-T      100BASE-TX      100BASE-T4  
 1000BASE-T    10GBASE-T      ATM-25  
 ATM-51      ATM-155      100VG-AnyLan  
 TR-4      TR-16 Active      TR-16 Passive